

How can I connect "ME MIDI Sampler" with an external MIDI keyboard or sequencer?

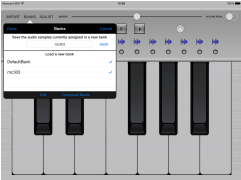
- 1) using the **Camera Connection Kit (USB)** + a commercial **USB to MIDI adapter** for MAC or PC
- OR
- 2) using the **iRig MIDI** adapter
- OR
- 3) using a **commercial MIDI adapter** for iPad, iPhone, iTouch

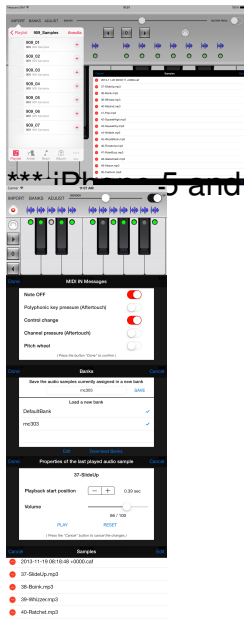
All the **MIDI keyboards or sequencers** are compatible with "ME MIDI Sampler" app.

iRig KEYS is compatible with "ME MIDI Sampler".

Wi-Fi or Bluetooth MIDI Keyboard are compatible with "ME MIDI Sampler".

*** iPad version screen shots (iPhone and iTouch version screen shots below) ***





***: Desktop 5 and iTouch (5th generation, retina display 4") version screen shots ***



***: Desktop 3 and iTouch (classic) version screen shots ***